

**Status indicators**

The Status indicators provide a quick visual reference for systems status.

**Ready to arm** ✓

Indicator lights when the system is ready to turn on (arm). (24 hour points, such as fire points, are always monitored.)

**On (armed)** 🔒

Indicator lights when the system is on (armed).

**Trouble** ⚠️

Indicator lights when a trouble condition exists.

**Gas** ⚡

Indicator lights when a gas alarm exists.

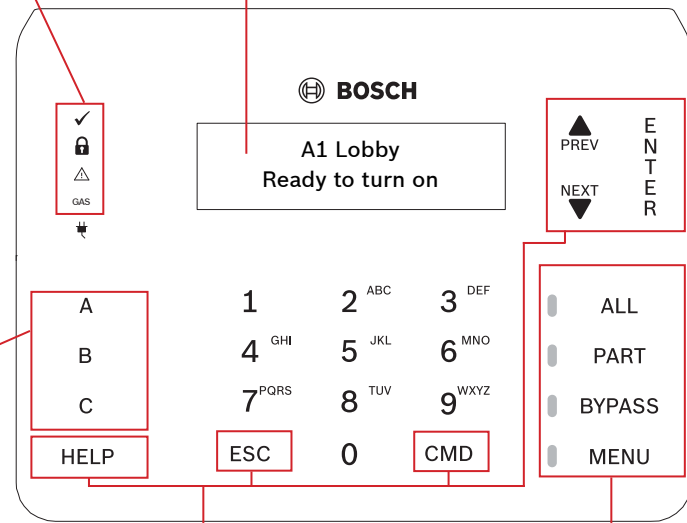
**Power** ⚡

Indicator lights when the system has AC (Mains) power.

**Programmable function keys**

Press and hold these keys to activate user functions, as configured by your security company. Pressing the keys turns on keypad backlighting, and the keypad sounds the keypress tone (short beep).

**Alphanumeric display**



**Navigation keys**

When pressed, these keys turn on keypad backlighting and emit the keypress tone (short beep).

**PREV and NEXT**

When lit, use these keys to scroll through alarm points, lists, and text.

**ENTER**

Use the [ENTER] key to complete the entry of your passcode, to select a menu item, or to answer Yes to a keypad request.

**ESC**

The [ESC] (Escape) key has two uses. First, use the [ESC] (Escape) key to exit from menus and functions. Also, use the key as a backspace when you enter names and numbers.

**CMD**

Use the [CMD] key in combination with one or two number keys to perform select functions.

**HELP**

Use the [HELP] key to go to the keypad Help. The Help shows on the display in your display language.

**Commands**

You can initiate functions with the [CMD] key plus the one or two digit command.

If you know the command number, press the [CMD] key and then the one or two digit command.

\_\_\_\_\_ or \_\_\_\_\_

After you press [CMD], you can use [PREV] or [NEXT] to move through the list of commands. Press [ENTER] when viewing the desired command to activate it.

Command	Function
[CMD] 0	Bypass
[CMD] 0 0	Unbypass
[CMD] 1	All on (with delay)
[CMD] 1 1	All On, Instant
[CMD] 2	Part On, Instant
[CMD] 3	Part On (with delay)
[CMD] 4	Silence Trouble Sounders
[CMD] 4 0	See Alarms
[CMD] 4 1	Test Report
[CMD] 4 2	Status Report
[CMD] 4 3	RPS Answer
[CMD] 4 4	Intrusion Walk Test
[CMD] 4 5	Date and Time
[CMD] 4 6	Door Control Menu
[CMD] 4 7	Reset Sensors

Command	Function
[CMD] 4 9	Change Display
[CMD] 5 0	Go to Area
[CMD] 5 1	Extend Close
[CMD] 5	SKED Menu
[CMD] 5 3	Delete User
[CMD] 5 4	Output Change Menu
[CMD] 5 5	Change Passcode
[CMD] 5 6	Add User
[CMD] 5 7	Default Text
[CMD] 5 8	Fire Walk Test
[CMD] 5 9	Show Revision
[CMD] 6	Watch Mode
[CMD] 7*	Special Alert _____
[CMD] 8	Open Main Menu
[CMD] 9*	Special Alert _____

**Intrusion function keys**

When pressed, these keys turn on keypad backlighting and emit the keypress tone (short beep).

**ALL**

Press to turn the intrusion system All On.

**PART**

Press to turn the intrusion system Part On.

**BYPASS**

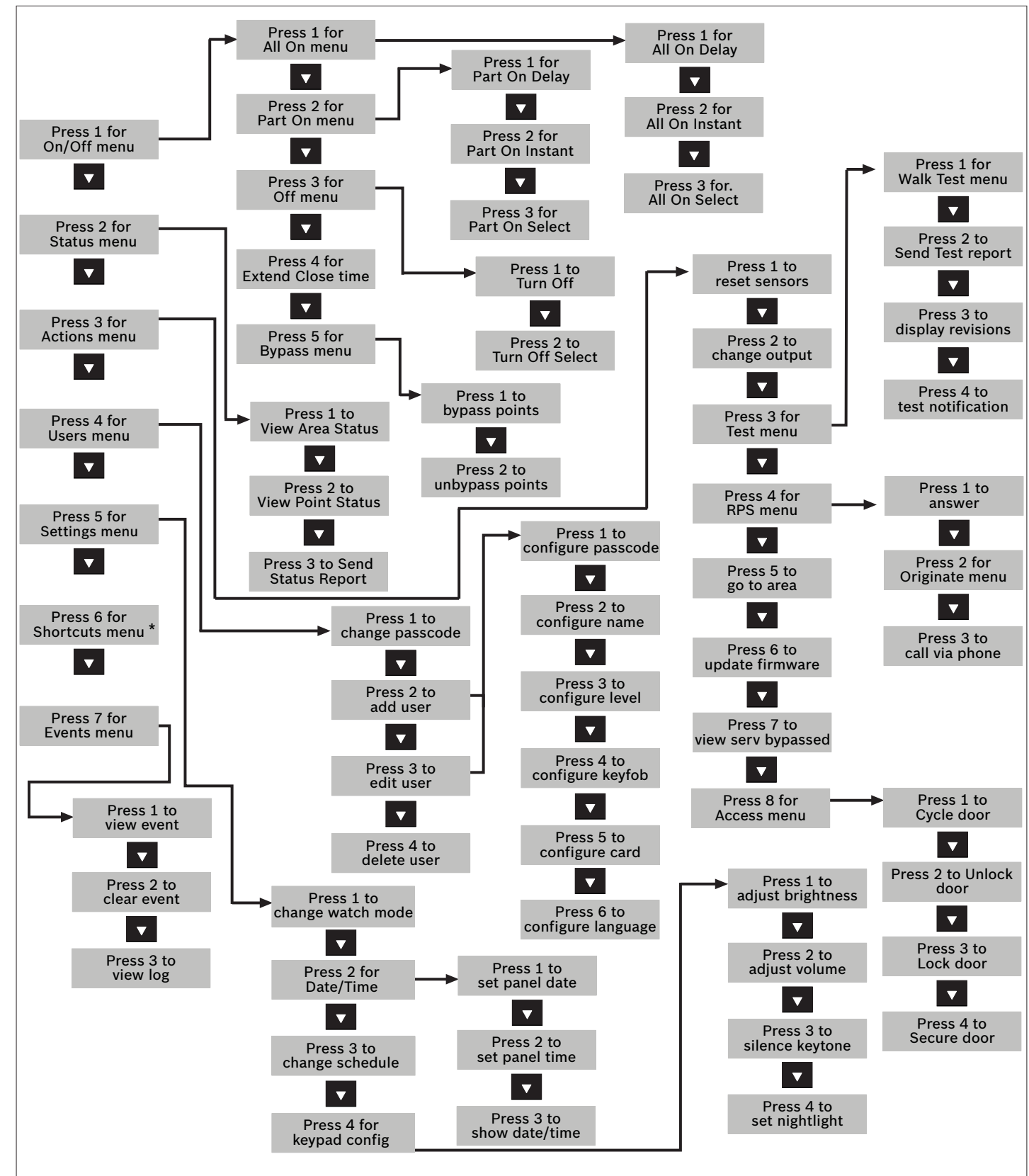
Press to open the menu to bypass points.

**MENU**

Press to open the keypad's Main menu.

**Menu tree**

The keypad offers an easy-to-use menu tree structure. To access the menu tree, press [MENU] or press [CMD][8]. Each menu option has a number. At each level, you can press the number for the desired menu option. Otherwise, use [PREV] or [NEXT] to review your options at that level, and then press [ENTER] when you see the desired menu option. The menu tree figure shows the menu structure and the numbers associated for each menu option.



\*As configured by your security company. NOTICE! The Access menu and the option to configure a card are available on compatible security systems only.

## 2 | Turn on (arm) your system

You can turn on (arm) your system using different methods. Do one of the following:

Enter your passcode and press [ENTER] to turn All On with a delay.

\_\_\_\_\_ or \_\_\_\_\_

Use one of the available commands:

For All On (with delay): [CMD][1]

For All On, Instant: [CMD][1][1]

For Part On, Instant: [CMD][2]

For Part On (with delay): [CMD][3]

\_\_\_\_\_ or \_\_\_\_\_

Use the menus. Begin by pressing [MENU] or by pressing [CMD][8].  
For All On: Go to [1] On/Off > [1] All On > [1] All On Delay.  
For All On, Instant: Go to [1] On/Off > [1] All On > [2] All On Instant.  
For Part On: Go to [1] On/Off > [2] Part On > [1] Part On Delay  
For Part On, Instant: Go to [1] On/Off > [2] Part On > [2] Part On Instant.

The menu options also allow you to choose individual areas to turn on. Open the All On or Part On menu, press [3] to open the Select menu, and then use [NEXT] and [ENTER] to choose On Instant or On Delay and the area to turn on.

\_\_\_\_\_ or \_\_\_\_\_

Press the [ALL] or [PART] key.

## 3 | Turn off (disarm) your intrusion system

You can turn off (disarm) your system using different methods. Do one of the following:

Enter your passcode.

\_\_\_\_\_ or \_\_\_\_\_

Use the menus. Begin by pressing [MENU] or by pressing [CMD][8].  
For Turn Off: Go to [1] On/Off > [3] Off > [1] Off.  
For Turn Off Select: Go to [1] On/Off > [3] Off > [2] Off Select. Then use [NEXT] and [ENTER] to choose the area to turn off.

## 4 | Change your passcode

You can change your own passcode. Do one of the following:

Use the command:  
[CMD][5][5], and then follow the prompts.

\_\_\_\_\_ or \_\_\_\_\_

Begin by pressing [MENU] or by pressing [CMD][8].  
Go to [4] Users > [1] Change Passcode, and then follow the prompts.

## 5 | Configure users

You can change passcodes for other users, and you can add, remove, and replace keyfobs and cards.

### 5.1 | Add users

Use the command or the menu to open the Add User option, and then follow the prompts to configure the user's passcode, name, authority level, keyfob (if desired), language (when applicable), and card (when applicable).

Use the command:  
[CMD][5][6]

\_\_\_\_\_ or \_\_\_\_\_

Use the menus:  
Begin by pressing [MENU] or by pressing [CMD][8].  
Go to [4] Users > [2] Add User.

### 5.2 | Edit Users

Use the menu to open the Edit User option, and then follow the prompts to configure the user's passcode, name, authority level, keyfob (if desired), language (when applicable), and card (when applicable).

Use the menus:  
Begin by pressing [MENU] or by pressing [CMD][8].  
Go to [4] Users > [3] Edit User.

### 5.3 | Delete users

Use the command or the menu to open the Delete User option, and then follow the prompts to delete the user.

Use the command:  
[CMD][5][3]

\_\_\_\_\_ or \_\_\_\_\_

Use the menus:  
Begin by pressing [MENU] or by pressing [CMD][8].  
Go to [4] Users > [4] Delete User.

## 6 | Alarms

When the security system is in alarm, the number of alarms shows on the display.

Enter your passcode to silence alarms. If the system is on (armed), silencing the alarm also turns the system off. The system now shows Alarm Silenced, and then the number of points in alarm, and the names of all the points in alarm, in the order of occurrence.

## 7 | Shortcuts

You can access your shortcuts through the menu:  
Begin by pressing [MENU] or by pressing [CMD][8].  
Go to [6] Shortcuts and then use [NEXT] and [ENTER] to choose the shortcut you wish to run.

## 8 | Keypad cleaning

Use a soft cloth and non-abrasive cleaning solution to clean your keypad (for example, microfiber cloth and eyeglass cleaner). Spray the cleaner onto the cloth. Do not spray cleaners directly onto the keypad.

### Copyright

This document is the intellectual property of Bosch Security Systems, Inc. and is protected by copyright. All rights reserved.

### Trademarks

All hardware and software product names used in this document are likely to be registered trademarks and must be treated accordingly.



## Two-line Alphanumeric Keypad B920/B921C



en User's Quick Reference Guide

**Bosch Security Systems, Inc.**  
130 Perinton Parkway  
Fairport, NY 14450  
USA  
[www.boschsecurity.com](http://www.boschsecurity.com)

**Bosch Sicherheitssysteme GmbH**  
Robert-Bosch-Ring 5  
85630 Grasbrunn  
Germany

